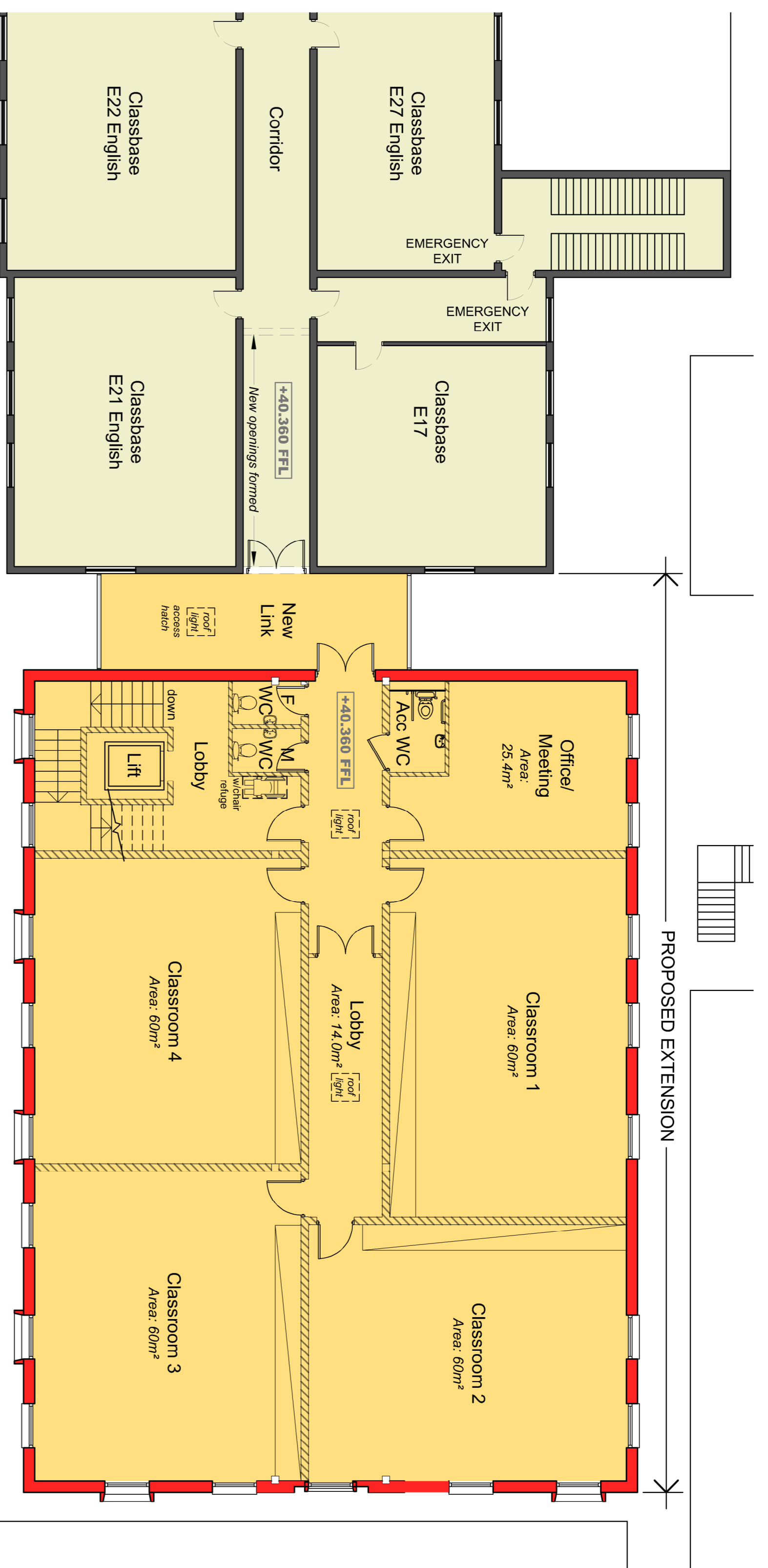
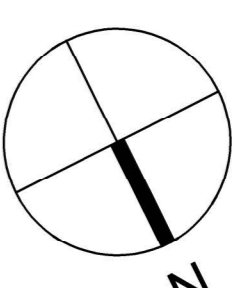
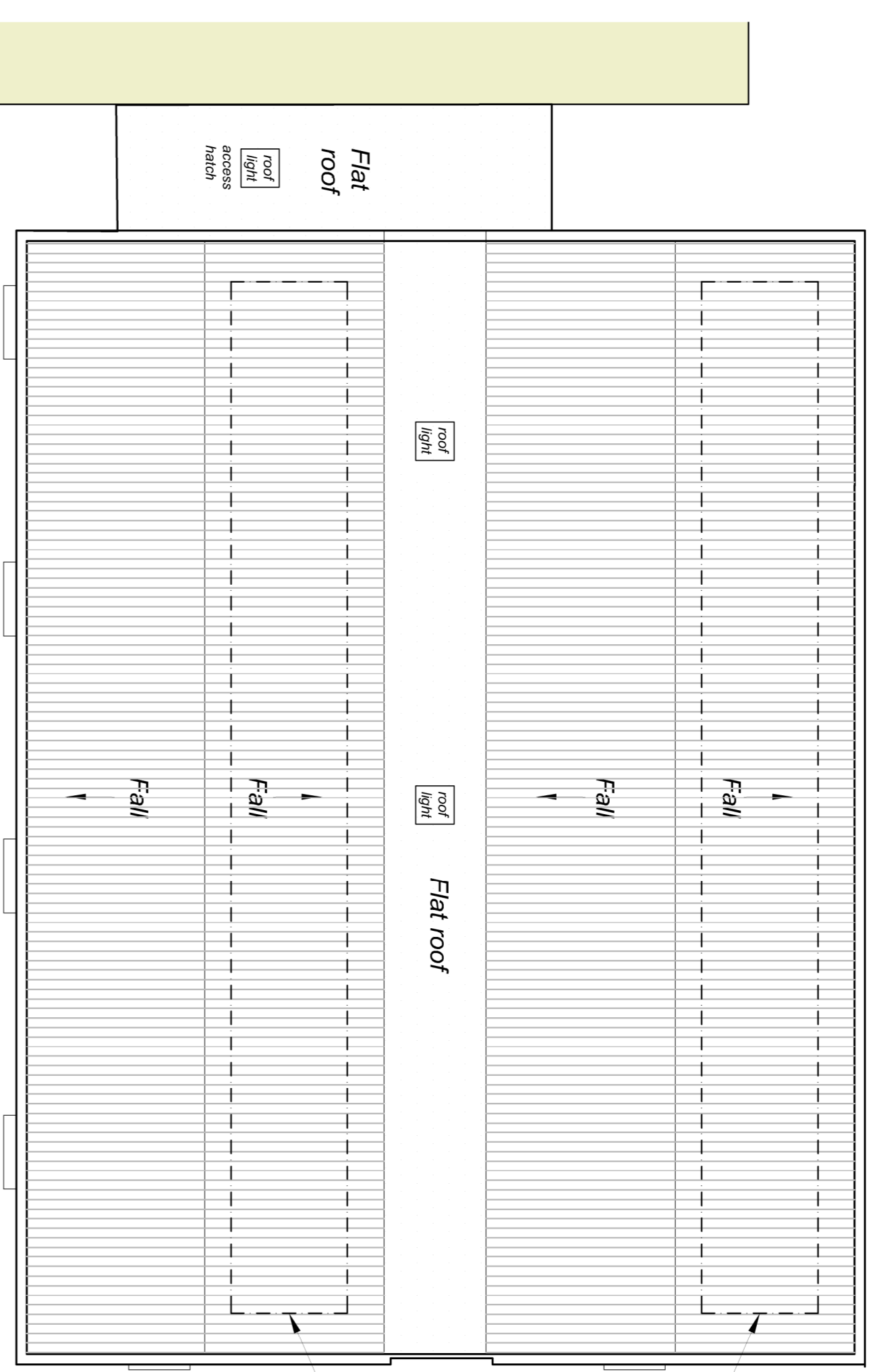


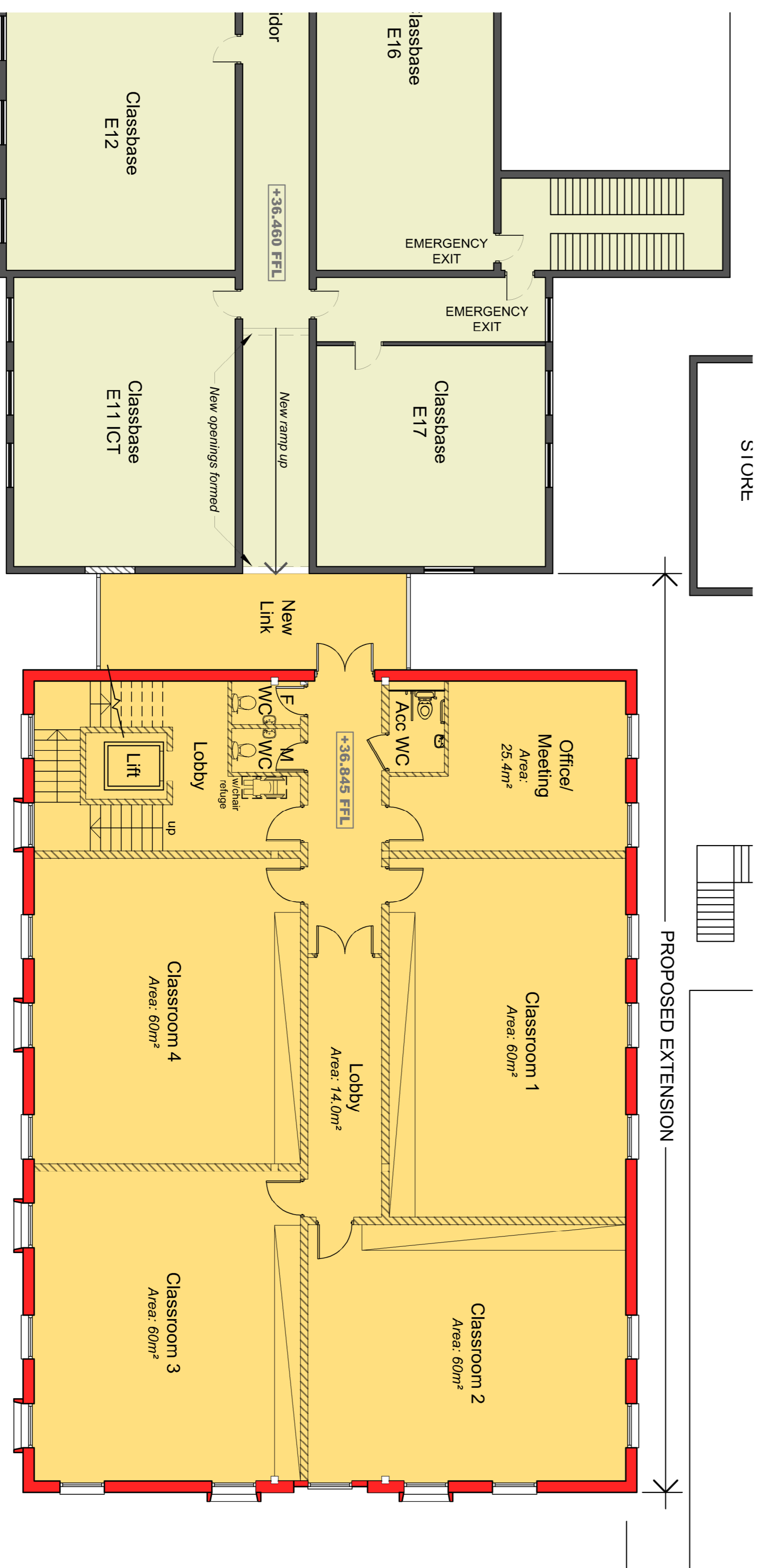
Ingleton Wood LLP shall have no liability to the Employer arising out of any unauthorised modification or amendment to, or any transmission, copy or use of the main plan or any proprietary work contained therein, or any reproduction, copying or use of the main plan or any proprietary work contained therein, or any transmission, copy or use of the main plan or any proprietary work contained therein, or any reproduction, copying or use of the main plan or any proprietary work contained therein. All dimensions are to be checked and verified on-site by the Main Contractor prior to commencement, any discrepancies are to be reported to the Contract Administrator. This drawing is to be read in conjunction with all other relevant specifications. © Ingleton Wood LLP Do Not Scale



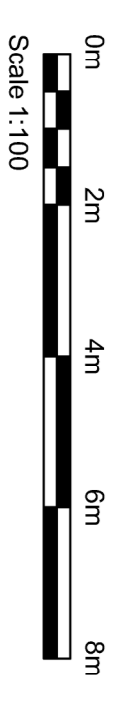
PROPOSED SECOND FLOOR PLAN



PROPOSED ROOF PLAN



PROPOSED FIRST FLOOR PLAN



Scale 1:100

P1	Project to North Extension added	14.05.18 ASJ CM
P2	Window production added to North Extension	11.05.18 ASJ CM
P3	Parting Issue	05.04.18 MN CM
P4	Issue for Issue	05.04.18 MN CM
P5	Issue for Issue	05.04.18 MN CM
P6	Issue for Issue	05.04.18 MN CM
P7	Issue for Issue	05.04.18 MN CM
P8	Issue for Issue	05.04.18 MN CM
P9	Issue for Issue	05.04.18 MN CM
P10	Issue for Issue	05.04.18 MN CM
P11	Issue for Issue	05.04.18 MN CM
P12	Issue for Issue	05.04.18 MN CM
P13	Issue for Issue	05.04.18 MN CM
P14	Issue for Issue	05.04.18 MN CM
P15	Issue for Issue	05.04.18 MN CM
P16	Issue for Issue	05.04.18 MN CM
P17	Issue for Issue	05.04.18 MN CM
P18	Issue for Issue	05.04.18 MN CM
P19	Issue for Issue	05.04.18 MN CM
P20	Issue for Issue	05.04.18 MN CM
P21	Issue for Issue	05.04.18 MN CM
P22	Issue for Issue	05.04.18 MN CM
P23	Issue for Issue	05.04.18 MN CM
P24	Issue for Issue	05.04.18 MN CM
P25	Issue for Issue	05.04.18 MN CM
P26	Issue for Issue	05.04.18 MN CM
P27	Issue for Issue	05.04.18 MN CM
P28	Issue for Issue	05.04.18 MN CM
P29	Issue for Issue	05.04.18 MN CM
P30	Issue for Issue	05.04.18 MN CM
P31	Issue for Issue	05.04.18 MN CM
P32	Issue for Issue	05.04.18 MN CM
P33	Issue for Issue	05.04.18 MN CM
P34	Issue for Issue	05.04.18 MN CM
P35	Issue for Issue	05.04.18 MN CM
P36	Issue for Issue	05.04.18 MN CM
P37	Issue for Issue	05.04.18 MN CM
P38	Issue for Issue	05.04.18 MN CM
P39	Issue for Issue	05.04.18 MN CM
P40	Issue for Issue	05.04.18 MN CM
P41	Issue for Issue	05.04.18 MN CM
P42	Issue for Issue	05.04.18 MN CM
P43	Issue for Issue	05.04.18 MN CM
P44	Issue for Issue	05.04.18 MN CM
P45	Issue for Issue	05.04.18 MN CM
P46	Issue for Issue	05.04.18 MN CM
P47	Issue for Issue	05.04.18 MN CM
P48	Issue for Issue	05.04.18 MN CM
P49	Issue for Issue	05.04.18 MN CM
P50	Issue for Issue	05.04.18 MN CM
P51	Issue for Issue	05.04.18 MN CM
P52	Issue for Issue	05.04.18 MN CM
P53	Issue for Issue	05.04.18 MN CM
P54	Issue for Issue	05.04.18 MN CM
P55	Issue for Issue	05.04.18 MN CM
P56	Issue for Issue	05.04.18 MN CM
P57	Issue for Issue	05.04.18 MN CM
P58	Issue for Issue	05.04.18 MN CM
P59	Issue for Issue	05.04.18 MN CM
P60	Issue for Issue	05.04.18 MN CM
P61	Issue for Issue	05.04.18 MN CM
P62	Issue for Issue	05.04.18 MN CM
P63	Issue for Issue	05.04.18 MN CM
P64	Issue for Issue	05.04.18 MN CM
P65	Issue for Issue	05.04.18 MN CM
P66	Issue for Issue	05.04.18 MN CM
P67	Issue for Issue	05.04.18 MN CM
P68	Issue for Issue	05.04.18 MN CM
P69	Issue for Issue	05.04.18 MN CM
P70	Issue for Issue	05.04.18 MN CM
P71	Issue for Issue	05.04.18 MN CM
P72	Issue for Issue	05.04.18 MN CM
P73	Issue for Issue	05.04.18 MN CM
P74	Issue for Issue	05.04.18 MN CM
P75	Issue for Issue	05.04.18 MN CM
P76	Issue for Issue	05.04.18 MN CM
P77	Issue for Issue	05.04.18 MN CM
P78	Issue for Issue	05.04.18 MN CM
P79	Issue for Issue	05.04.18 MN CM
P80	Issue for Issue	05.04.18 MN CM
P81	Issue for Issue	05.04.18 MN CM
P82	Issue for Issue	05.04.18 MN CM
P83	Issue for Issue	05.04.18 MN CM
P84	Issue for Issue	05.04.18 MN CM
P85	Issue for Issue	05.04.18 MN CM
P86	Issue for Issue	05.04.18 MN CM
P87	Issue for Issue	05.04.18 MN CM
P88	Issue for Issue	05.04.18 MN CM
P89	Issue for Issue	05.04.18 MN CM
P90	Issue for Issue	05.04.18 MN CM
P91	Issue for Issue	05.04.18 MN CM
P92	Issue for Issue	05.04.18 MN CM
P93	Issue for Issue	05.04.18 MN CM
P94	Issue for Issue	05.04.18 MN CM
P95	Issue for Issue	05.04.18 MN CM
P96	Issue for Issue	05.04.18 MN CM
P97	Issue for Issue	05.04.18 MN CM
P98	Issue for Issue	05.04.18 MN CM
P99	Issue for Issue	05.04.18 MN CM
P100	Issue for Issue	05.04.18 MN CM

Ingleton Wood Proprietary and Confidential
 Building design solutions
 1 01275 637880
 www.ingletonwood.co.uk

Vision, form and function

Project: Proposed Classroom Block Extension
 Client: St Bernard's High School
 Location: Milton Road Westcliff-on-Sea SS0 7J5